

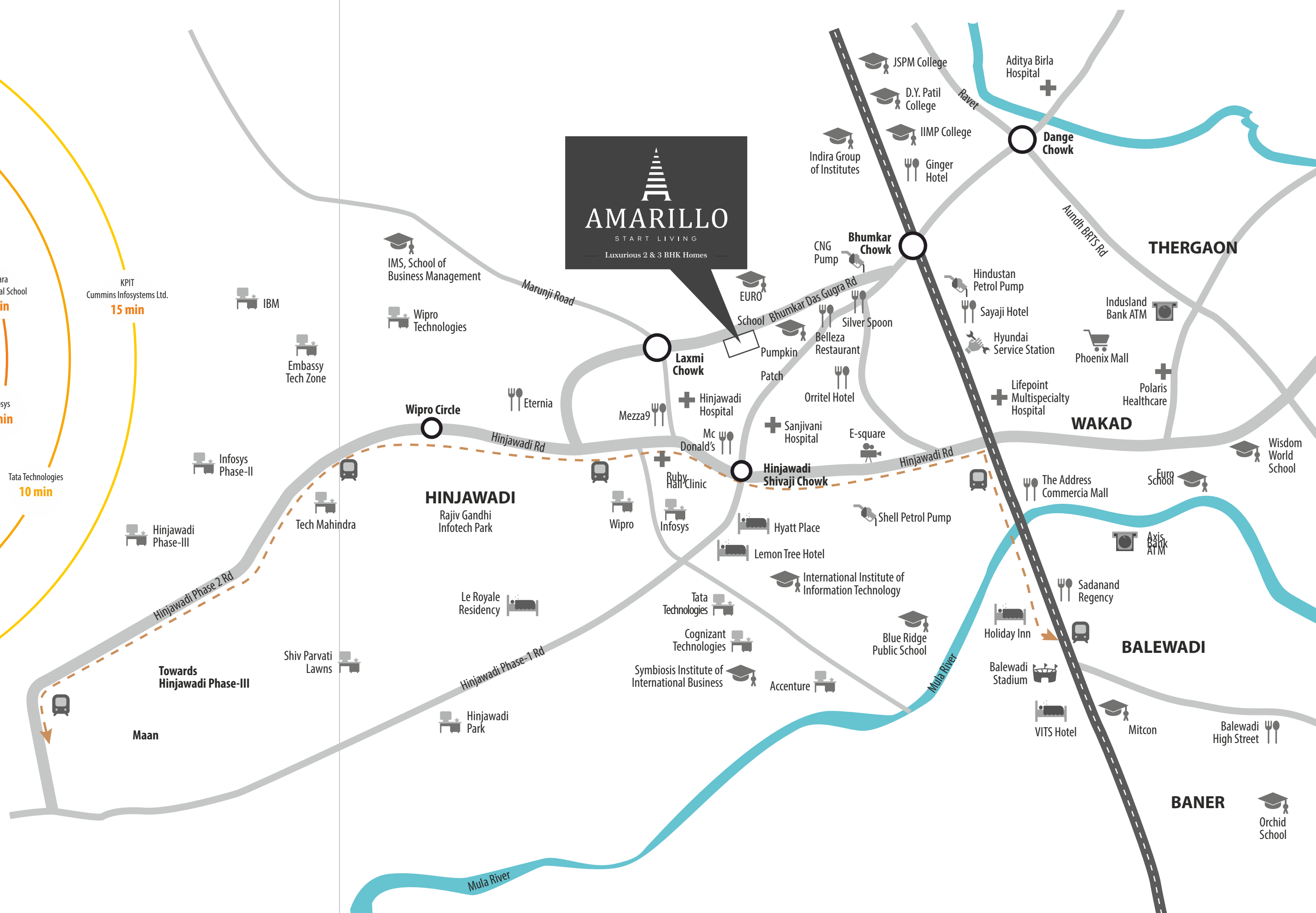
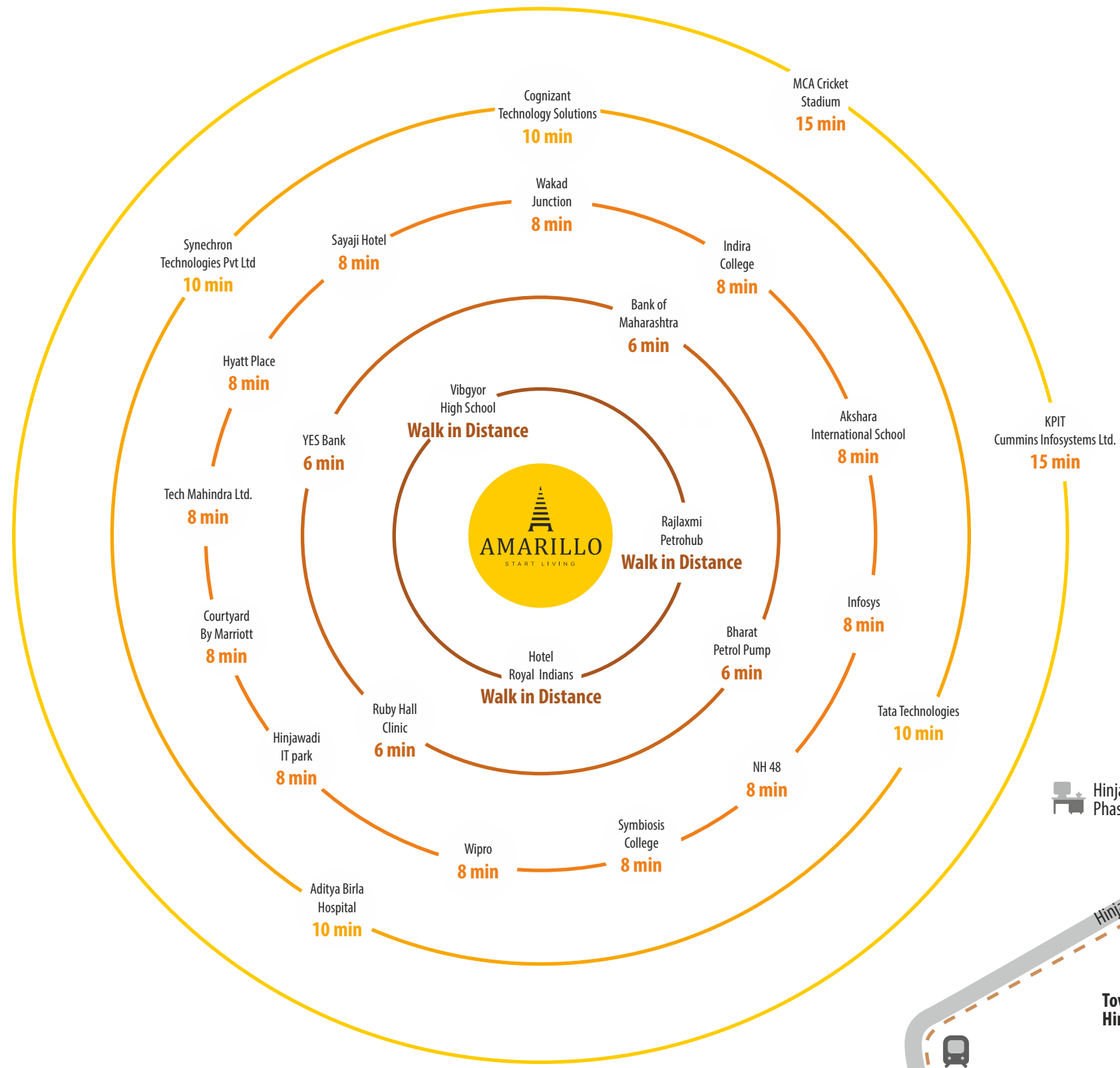


AMARILLO

START LIVING

— 2 & 3 BHK Happening Homes —

Start Exclusive Comfort



- | | | |
|--------------|----------------------|-----------------------------|
| IT Companies | Petrol Pumps | 3-5 Star Hotels |
| Metro | Car Service Stations | Multiplex, Shopping Markets |
| Institutes | Bank ATM | Balewadi Stadium |
| Hotels | Hospitals | |



A PROMISING JOURNEY

11+

Years of rich experience

3

Grand ongoing projects

10+

Exclusive projects completed

5,000+

Happy customers

20 L Sq.Ft.

Delivered & Under Development



Abodes you can't get enough of...

Krishna Group, a name that builds excellence in each of its creation. Right from the inception, the group has been going strength to strength, crafting abodes that give sense of exclusivity to every family residing there.

Our projects are an epitome of contemporary architectural design that blends luxury and usability. By all means, you will grow affection for your abode at Krishna Developers.

We at Krishna Group are committed to deliver operational excellence and set a benchmark for customer satisfaction. The group endeavours to redefine real estate in Pune. The group's belief is that product and design innovation should be a seamless process that creates a path to excellence.

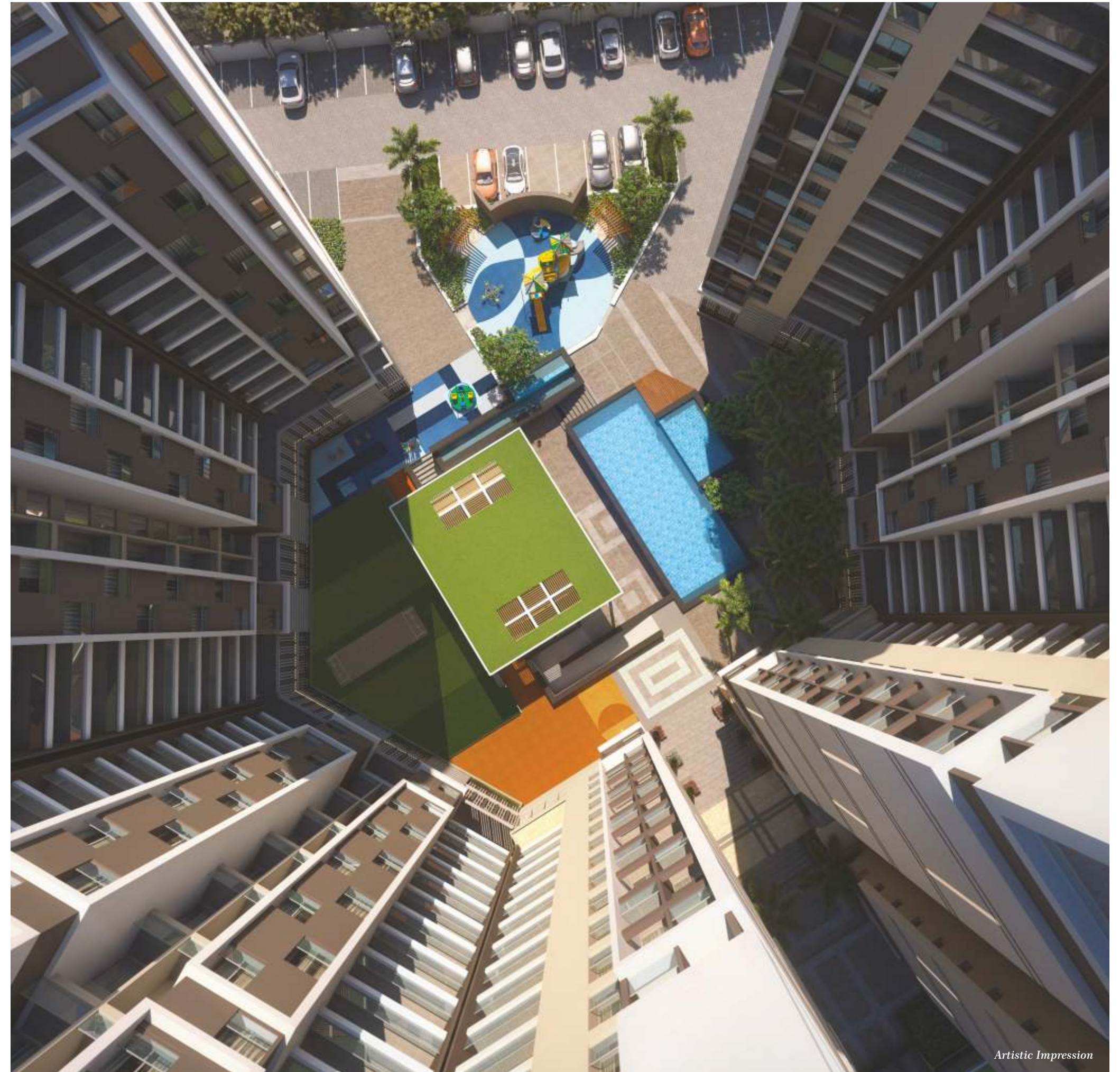
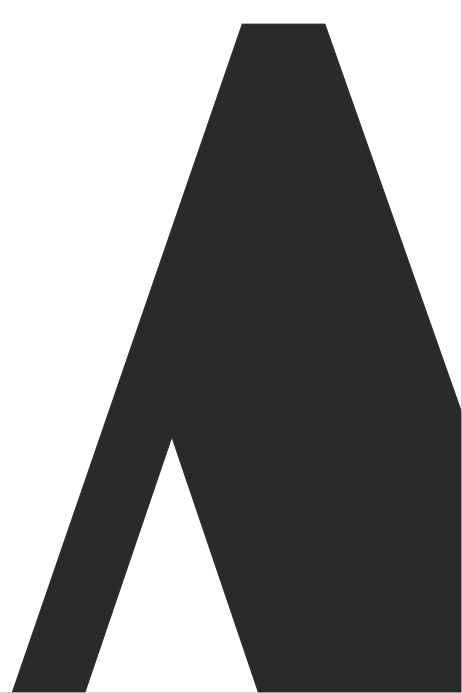
A Home Beyond Imagination

Your home at Krishna Amarillo will turn your ordinary routine into an extraordinary life. Welcome to Krishna Amarillo, a world out of this world. Here, homes transcend their facade and build memorable & joyful moments for you & your loved ones. Amarillo's exclusive amenity space will ensure that every moment of yours is filled with fun and excitement. Spacious & thoughtfully designed 3-side open homes will give you ample ventilation and natural sunlight.

Being in the heart of Hinjawadi, everything right from daily necessities to your workplace is at a walking distance. So, wait no more! Start living.



The God's View
Of Your Perfect Life!



Artistic Impression



More
Than

Just
4 Walls



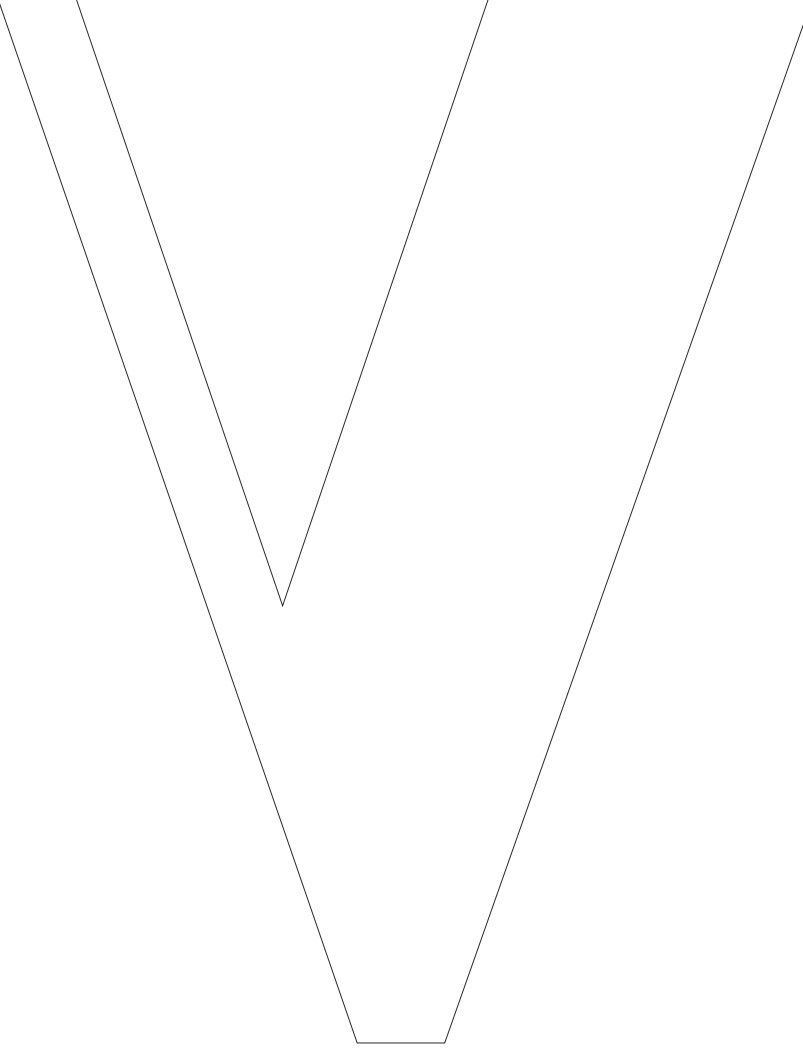
Start
Living
With
Exclusive
Comfort

One

Of

Its

Kind



Crèche

Workspace

Box Cricket Arena

Swimming Pool For Children

Swimming Pool For Adults





Crèche

Your kid is the apple of your eyes. So, taking his care is your utmost responsibility as parents. But sometimes, unwillingly, you have to leave your child behind if you are working parents. But don't worry, we here at Krishna Amarillo are giving you a big sigh of relief! Presenting an exclusive Crèche where your child will be completely taken care of. At Crèche, we are providing Rubber Pit, Sandpit & a Toddlers' Play Area so that your kid can enjoy his/her playtime to the fullest. The design of the Crèche is child-centric, and that's why it will be a second home for your child. We also provide various safety features like CCTV cameras to ensure the complete safety of your child.



Workspace

The WFH pattern made your home your workstation. But while working from home, you may face quite a few disturbances. Catching on this very pain point, we're bringing you a dedicated workplace in our amenity premise. Here, we're offering you all the necessary facilities like a proper seating arrangement & Wi-Fi connectivity so that you can work without any disturbances.

W



B_{ox} C_{ricket} A_{rena}

Cricket is no lesser than a religion in India and to fuel up your cricket craze, we bring to you one of its kind Box Cricket Arena where children, adults or anyone can indulge in the friendly & exciting game of cricket. This exclusive feature of our project certainly adds dash of enjoyment to your life.



Swimming

Pool

for

Children

Kids have their own way of enjoyment and they'd not like it if someone spoils their fun. This is exactly why we have designed a separate swimming pool for them, where they can enjoy and even learn swimming as this swimming pool is completely safe for them.

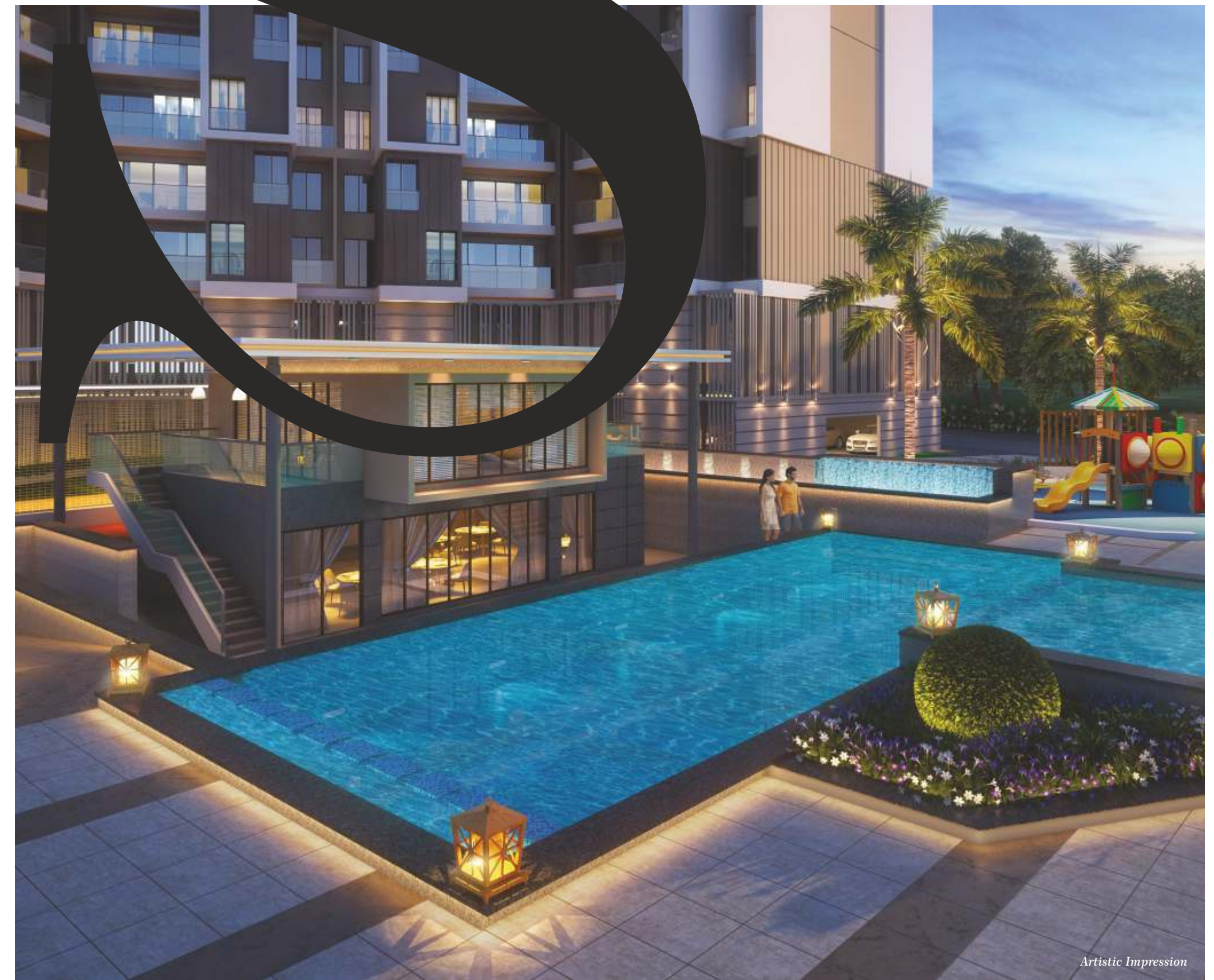


Swimming

Pool

for

Adults



Even adults wish to have fun and quality time without any disturbance and to fulfil their wish, we're exclusively offering a separate Swimming Pool for adults. Be it a holiday or weekend, you can drench into tranquillity without anyone bothering you, not even your kids.



Artistic Impression


AMARILLO
START LIVING
— 2 & 3 BHK Happening Homes —

Sheer Elegance..

Making You

Stand Tall

Live

Opulent

Life

Life at Krishna Amarillo will be a true epitome of opulent living by all means. Right from the unique amenities, superlative specifications to every corner of your home, everything will have a touch of opulence.

Fun City

Leisure City

Fitness City

Sports City



F_{un} &

F_{itness}

go

2gether!



Artistic Impression



Artistic Impression

Infinite Happiness Comes With **2** Clubhouses

Krishna Amarillo will never cease to amaze you for each of its unique feature. To amaze you even more, we're coming up with 2 designer clubhouses. As we all know that fitness and sports activities keep our body fit and healthy, likewise, entertainment is also an exercise for our mind that keeps our soul healthy. And by keeping these two exercises exclusive, you can truly enjoy them and can make most of them. The 2 designer clubhouses at Amarillo represent 2 zones i.e. Sports Zone & Entertainment Zone.

At Sports Zone, you can indulge in various sports activities or you can just pump up your energy with your favourable fitness exercises. In the entertainment zone, you can celebrate every joyous moment of your life with great fervour. Here, you have a AV room and many more such facilities that will ensure that happiness will flow like a pleasant breeze. The design of these clubhouses is so convenient that you can easily access both the clubhouses and zones with utmost ease. It's here that a dual dose of happiness awaits you!



Feel
Like A
Celebrity

Leisure City

At Krishna Amarillo, hanging out with your buddies will be a different experience altogether. Come to Amarillo's one of the unique facilities, Cafeteria and indulge in a hot gossip over a hot sizzling cup of coffee or a saccharine tea, whatever is your favourite pick. And let your quality time remember forever.

Cafeteria

AV Room

Organising any activity is a piece of cake at Krishna Amarillo. Be that a fun-loving session of storytelling for kids, or an annual society meeting for the residents, Amarillo is giving you a fully-equipped AV Room. Our exclusive AV Room is equipped with a wide range of audio-visual devices, resources and services that will enrich the quality of your activities and will give you a superior experience for sure.





Fitness City

Gymnasium

In this hustle-bustle of daily life, it's quite challenging to stay fit. Considering this crucial fact, Amarillo is bringing a fully-equipped gym in its premise, just for you. Now, you don't have to enroll for any outside gym as you can indulge in a workout anytime you want and without paying a penny.

Meditation Area

At Amarillo, you won't get enough of the ways that let you be fit as fiddle. Presenting to you a soothing Meditation Area where you can drench into tranquillity and dissolve all the stress or you can just indulge in an agile yoga exercise that will make your life expandable, choice is yours!.



Y Sports City

Basketball Court

To fuel up youngsters' sports passion, we're bringing one of the zestful sports in the world, Basketball. At Amarillo, we're creating a basketball court with the all necessary sports equipment so that your young lad and his friends can enjoy this energetic sport of Basketball.



Table

Tennis

Even if it's raining outside, you can still have fun with your buddies and family inside. Amarillo is bringing you one of the exciting sports in the book, Table Tennis. An exclusive TT court at Amarillo will surely give you a complete package of fun & exhilaration.





Artistic Impression

Greatest Of All Time Amenities

Beautiful, Tranquil World

- 2 Designer clubhouses
- Multilevel car park
- Party lawn
- Trimix internal road
- Chessboard
- Palm court
- Interaction plaza
- Practice basketball court
- Practice cricket pitch
- Swimming pool
- Baby pool
- Crèche
- Workspace

- Pathway
- Garden activity area
- Toddler play court
- Senior citizens sit-outs
- Indoor games
- Poolside deck
- Designer entrance lobby
- Cafeteria
- Wooden deck stage
- Meditation area
- Swing garden & kids' play area

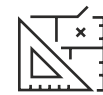
Finger Touch Luxury

- DTH connection for living room
- Provision for piped gas system
- Access controlled lobby
- Amphitheatre
- Three lifts for every wings
- Exclusive water feature
- Generator backup for common areas
- Audio visual room
- Auto door lifts with generator backup
- Intercom connectivity
- Modular kitchen with purifier
- Wi-Fi zones*
- Video door phone
- Smart digital lock

100% Peace 24x7

- Firefighting system
- Designer entrance gate with security cabin
- Security with CCTV cameras*

Grace In Every Inch Specifications



STRUCTURE

- Earthquake resistant RCC structure with best quality materials



FLOORING

- Vitrified flooring for an entire apartment
- Anti-skid ceramic tiles in toilet & terrace flooring



ELECTRIFICATION

- Concealed, premium copper wiring
- Television and AC point in the master bedroom
- DTH connection in living room
- Adequate electrical points with premium quality modular switches
- Provision for Wi-Fi/Broadband connectivity
- Provision for inverter in apartments
- Power backup for common areas and lifts



KITCHEN

- L-shaped black granite platform
- Designer dado tiles
- Provision for exhaust fan
- Water purifier for drinking water
- Branded modular kitchen
- Provision for gas pipe connection



DRY BALCONY

- Dry balcony with anti-skid tiles
- An additional bigger sink for easier utensil management



DOOR AND WINDOWS

- Main door with veneer on one side
- All doors with decorative laminates
- Marble/Granite door frame in toilets
- 3 track aluminium windows with mosquito mesh
- 4 side marble/granite window sill
- Sliding aluminium door for terraces
- Toughened glass railing in terraces



BRICKWORK & PLASTER

- Lightweight AAC block/Fly Ash cement block for internal & external walls
- Sand face external plaster
- POP/Gypsum finish for internal walls and ceilings of flats



BATHROOM

- Glazed designer wall tiles in all bathrooms up to lintel level
- Branded CP and sanitary fittings of good quality
- Provision for exhaust fan in bathrooms
- Washbasin with counters
- Solar heater connection in the master bedroom



PAINT

- Premium emulsion paint for internal walls
- Premium Acrylic/Texture paint on external walls

GRANDEUR AT A GLANCE



- 1 PARTY LAWN
- 2 STAGE
- 3 INDOOR GAMES / AV ROOM
- 4 ACTIVITY AREA / CAFETERIA
- 5 PALM PLAZA
- 6 SWIMMING POOL
- 7 WATER FEATURE
- 8 ENTRANCE WATER FEATURE
- 9 PALM COURT
- 10 AMPHITHEATRE
- 11 CRECHE / SENIOR CITIZEN LOUNGE
- 12 WORKSPACE / LIBRARY
- 13 PRACTICE BASKETBALL COURT
- 14 PLAY COURT
- 15 TODDLER'S PLAY AREA
- 16 CHILDREN'S PLAY AREA
- 17 BABY POOL
- 18 SERVICES
- 19 WEST PLAZA LANDSCAPE
- 20 EAST PLAZA LANDSCAPE

36 M WIDE EXISTING ROAD

36 M WIDE EXISTING ROAD

12 M WIDE INTERNAL ROAD

Amenity Space

PROPOSED COMMERCIAL

Artistic Impression

The common areas that have been shown in any form whatsoever is/are for the entire building or phase of the project and that the common areas will not be available on completion of the first phase of the project or later phases. The common area shall be available for the entire building and will be developed in a phase wise manner over a period of time and will be completed and handed over after all phases are completed and we have no objection for the same.



Artistic Impression

FEEL ARRIVED



Towering
Luxury

Look Inside



2 BHK APARTMENT



3 BHK APARTMENT

LEGEND

- | | | |
|---------------|------------------|-------------------|
| Ⓐ Entrance | Ⓔ Dry Terrace | Ⓛ Bathroom |
| Ⓑ Living Room | Ⓧ Terrace | Ⓜ Master Bathroom |
| Ⓒ Dining Area | Ⓨ Bedroom | |
| Ⓓ Kitchen | Ⓩ Master Bedroom | |

Creations Inspired by Our Customers

We at Krishna Group have innovation as our guiding principle. We endeavour to blend modern conveniences with environment-friendly features in our projects to bring about healthier lifestyle for city dwellers. We are growing along with our stakeholders including our customers. Our projects at strategic locations are adorning the city's skyline. While crafting feature-rich homes for our customers, we ensure they get optimum value for their investments for years. Continued satisfaction of our customers has always inspired us to do more and better.

ONGOING PROJECTS



AEROPOLIS, PHASE-III
2, 2.5 & 3 BHK Homes, Lohegaon, Pune



METROPOLIS, PHASE-II
1, 2 & 3 RHK Lohegaon, Pune



AMORAPOLIS
2 & 3 BHK Homes, Dhanori, Pune

COMPLETED PROJECTS

Acropolis-Baner
Aeropolis Phase-I

Aeropolis Phase-II
Metropolis Phase-I
Comficientra

V9 Landmark
Fortune 108
Bhakti Darshan

Fortune Mirador
Fortune Brookland

UPCOMING PROJECTS AT

Lohegaon | Dhanori | Wakad | NIBM-Annex | Charholi



A Project By:



IN ASSOCIATION WITH MR. S. S. KOKATE

LANDMARK PROJECTS

AMORAPOLIS (Dhanori) | AEROPOLIS (Lohegaon) | METROPOLIS (Lohegaon) | ACROPOLIS (Baner) | URBANO (Wagholi)

CREDITS

ARCHITECT
Vinod Dhusia

LANDSCAPE
DESIGNER
Suma Shilp

RCC DESIGNER
Spectrum Consultants

MEP
Siddhivinayak
Electrical Consultants

LEGAL
Rajiv Patel
and Associates

3D VISUALISATION
Square One
Media Solutions Pvt. Ltd.

BRAND CONSULTANT
Zest Creative

For bookings 75172 11100 / 75173 11100

For more projects: www.krishnagrouppune.com

Email: sales@krishnagrouppune.com



MAHARERA REG. No. P52100027235



Corporate Address: KRISHNA GROUP,
Office 304, Gopal Krupa Building,
Off. J.M. Road, Shivajinagar,
Pune-411005.



Site Address: Sr. No. 269P/271P, Marunji Road,
Near Laxmi Chowk, Hinjawadi Phase-1,
Hinjawadi, Pune-411057.

www.zestcreative.in

Disclaimer: The contents/pictures/images/renderings/maps are pure indicative in nature and artist's conception and not actual depiction of the buildings/landscapes, etc. and shall not be considered as our offer promise/commitment of any nature in respect of the project. The common areas that have been shown in any form whatsoever is/are for the entire building or phase of the project and that the common areas will not be available on completion of the first phase of the project or later phases.

The common area shall be available for the entire building and will be developed in a phase wise manner over a period of time and will be completed and handed over after all phases are completed and we have no objection for the same. You are requested to contact our Sales Team to understand the current details regarding the project and only after thorough understanding about the same make a decision to book the apartment/s in this project.

The developer reserves all the rights to use/develop/construct/build/expand the residential or commercial units/floors or in any other manner from the EXTRA FSI/TDR.